

Annex 2

How to upgrade the firmware when using the DINBOX M36

Date: 28 juin 2010

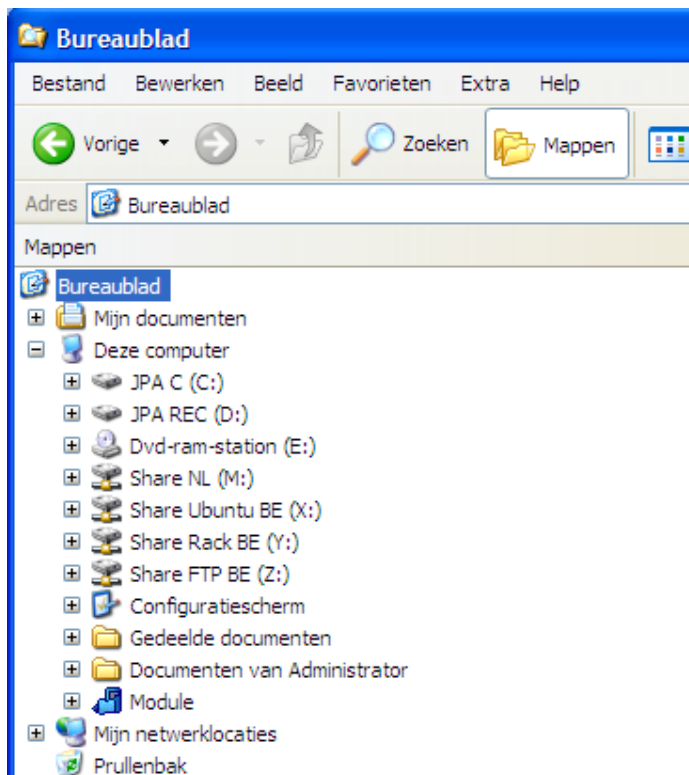
This document describes how to upgrade the DinBox M36 hardware (or any TC65i based hardware device) using the M36 software

Software upgrade procedure:

- 1) Connect the DinBox M36 hardware device to a Windows PC using the Serial Com port cable.
- 2) Request the latest software from MCS, distributor of the TC65i Cinterion module (m36.jad & m36.jar)
- 3) Download the Cinterion MES software (Module Exchange Suite) for Windows Explorer from the Dealer Area)

<http://mcs-support.info/> Support / Manuals, firmware, etc... / MCS DINBOX DB65
Download the file MES.RAR

- 4) Install the Windows MES software. After installation, open Windows Explorer you should have "Module" in the left overview tree.

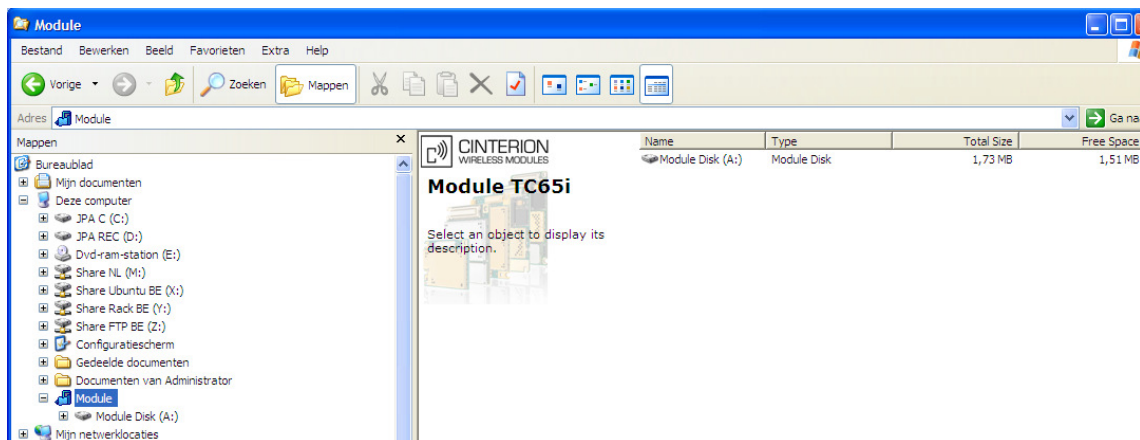


- 5) Select the right COM port by clicking on “Module” with the right mouse button & chose “properties”.

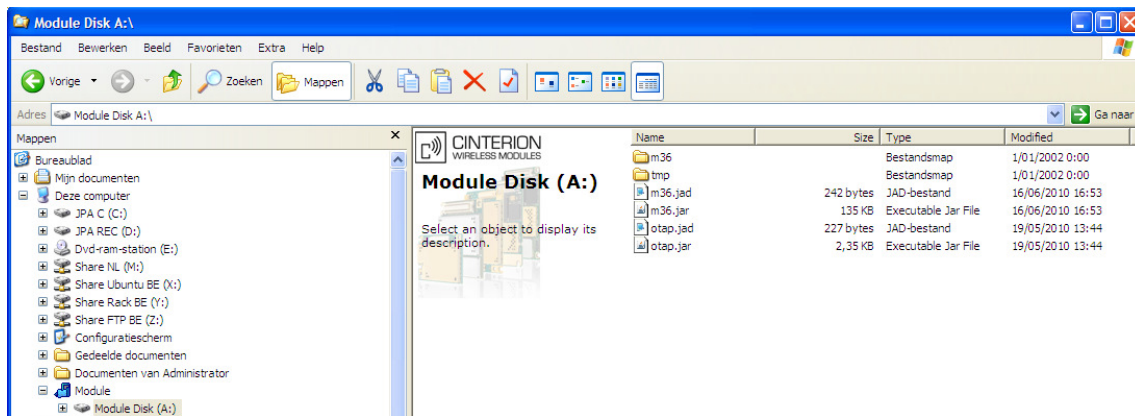


Note: The following upgrade procedure has a time limit of 20 seconds. Please read the procedure first before continuing. Due to the autostart settings, you have 20 seconds after starting the module to copy the new JAD an JAR file. After this timeout, the software will start with the new installed version.

- 6) Power-on the DinBox M36 hardware, after 3 seconds click on “module”. The following screen will appear:



7) Click on Module Disk (A:), the following screen will be displayed:



8) Copy the new m36.jad & m36.jar files over the existing files.

9) When ready, restart the DinBox M36 hardware.

Bausch Datacom NV/SA contact information:

BAUSCH DATACOM NV Belgium

Tiensesteenweg 54-56
B- 3360 Korbeek-Lo
Belgium

Phone: Int 32 (0)16 46 12 88

Fax: Int 32 (0)16 46 31 51

Info: info@bausch.be

Sales: sales@bausch.be

Support: support@bausch.be

Website : www.bauschdatacom.be