

DEMAS

DEVICE MANAGEMENT SYSTEM

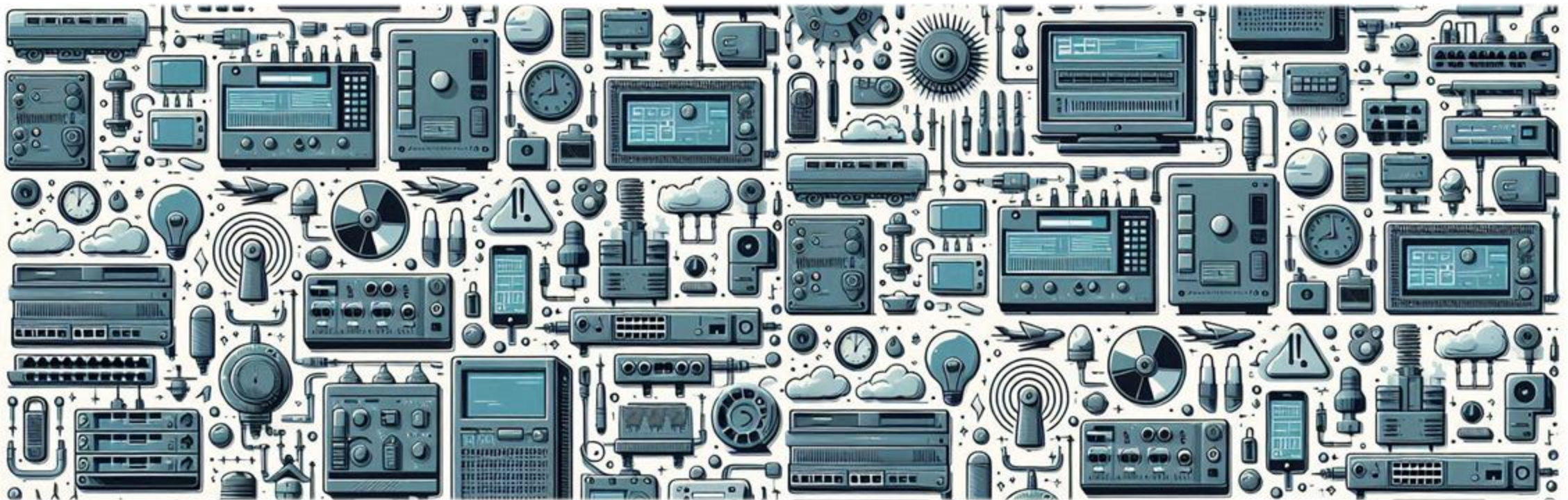
**YOUR COMPREHENSIVE
DEVICE MANAGEMENT
SOLUTION**

DEVICE MANGEMENT IN THE WORLD OF UTILITIES



THE DEVICE MANAGEMENT DILEMMA

- ▶ The number of devices increases very quickly
- ▶ The number of different device types grows with each new project
- ▶ The time available for an update is drastically reduced



SECURITY CONCERNS

- ▶ Outdated Software
- ▶ Malware
- ▶ Human Error (wrong mapping, wrong device)
- ▶ Lack of Visibility
- ▶ Insecure / Unauthorized Remote Access
- ▶ increasingly better attacks from inside and outside

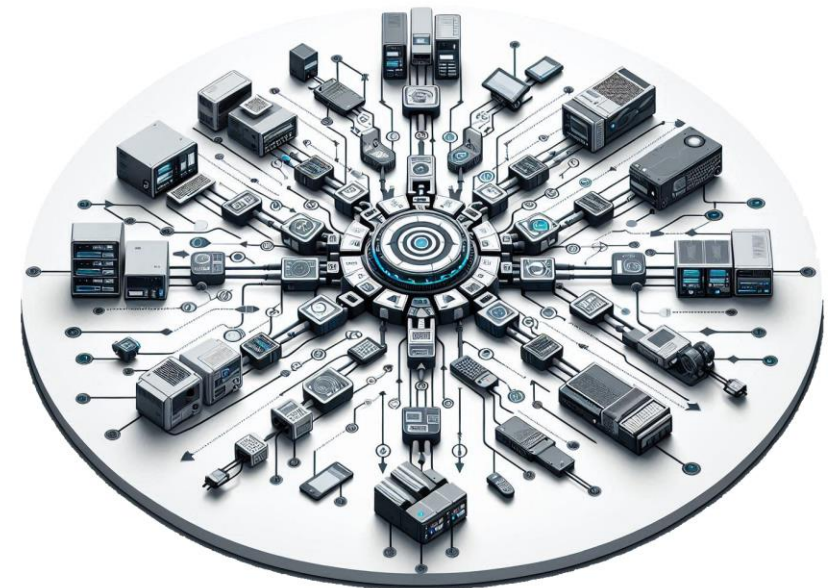
THE IMPACT OF UNMANAGED DEVICES

- Security Costs (data breaches, disruption of operations, attacks)
- Compliance Costs (regulatory fines)
- Replacements Costs (damages equipment)
- Reputational Costs (lost of customer trust)
- Indirect Costs (investigating, lost of productivity)

THE (DE)VICE (MA)NAGEMENT (S)YSTEM

DEMAS has been developed to act as a central source of information

The second important function concerns the management of devices, including the distribution of updates and the display of status information



KEY FEATURES OF DEMAS

➤ EFFICIENT:

- configurable flexible links to external web applications (based on ID's)
- data interfaces to existing applications
- management functions for different device types through manufacturer-related extensions (plugins)

➤ SECURE:

- multi-layered security measures at network and application level
- stable and fast update procedure

➤ RELIABLE

- developed according to ISO 27001
- databases and services can be distributed across multiple data centers

DEVICE MANAGEMENT MADE SIMPLE

The device management system (DEMAS) is a collection of tools that simplifies the management of devices



MANAGEMENT LIFE CYCLE PROCESS

9 steps of a successful management

1. PROVISIONING

2. DEVICE-INSTALLATION

3. NETWORK-CONNECTION

4. REGISTRATION

5. FINALISING META-DATA

6. SYSTEM-CONNECT

7. CONFIRMING

8. CHANGES

9. DEACTIVATION



RTU MANAGEMENT TASKS

An overview of the most important remote terminal unit tasks



COMMISSIONING

- DECOMMISSIONING



ADMINISTRATION

- CHANGE MANAGEMENT
- LOCATION MANAGEMENT



SYSTEM CONTROL

- CONFIGURATION (I.E. MAPPING)
- RTU MANAGEMENT (HW/SW)

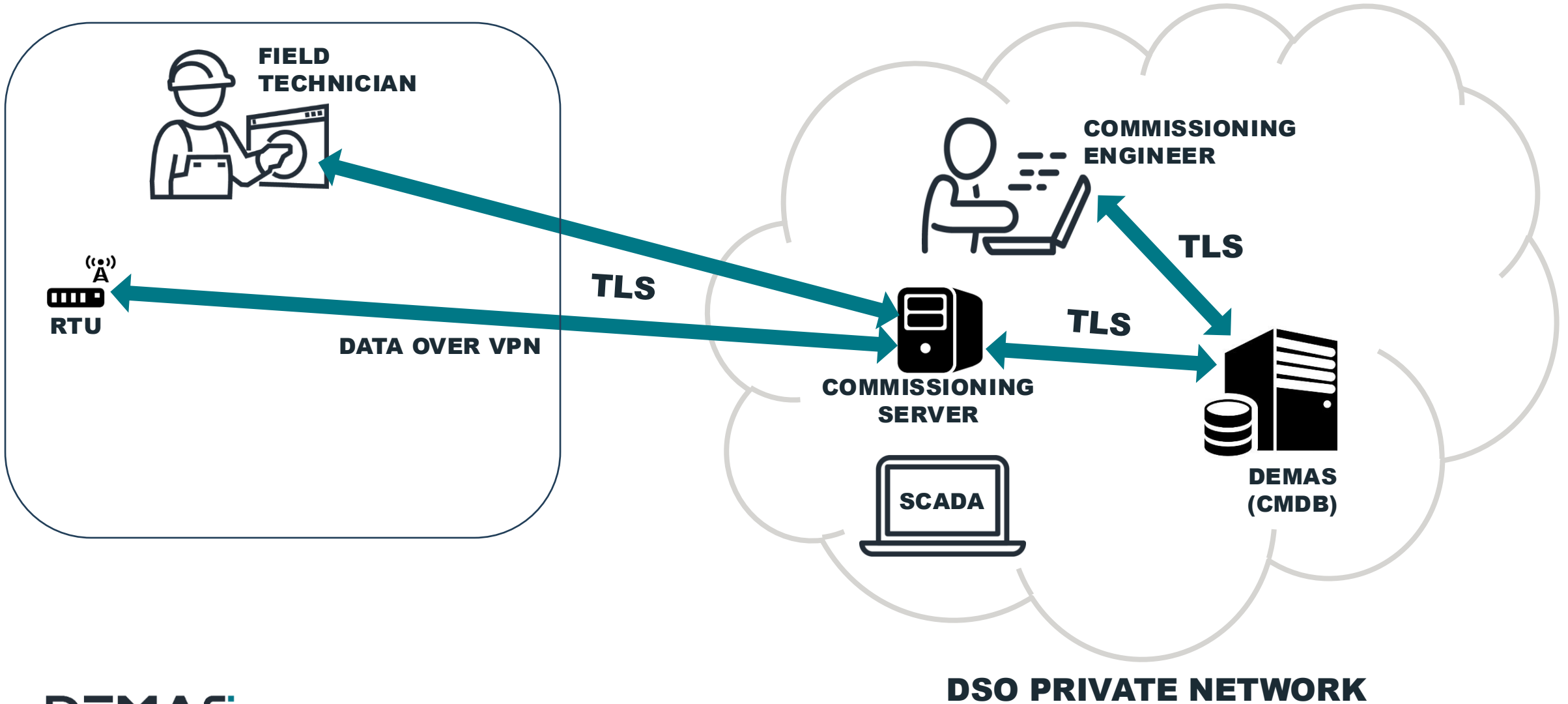


MONITORING

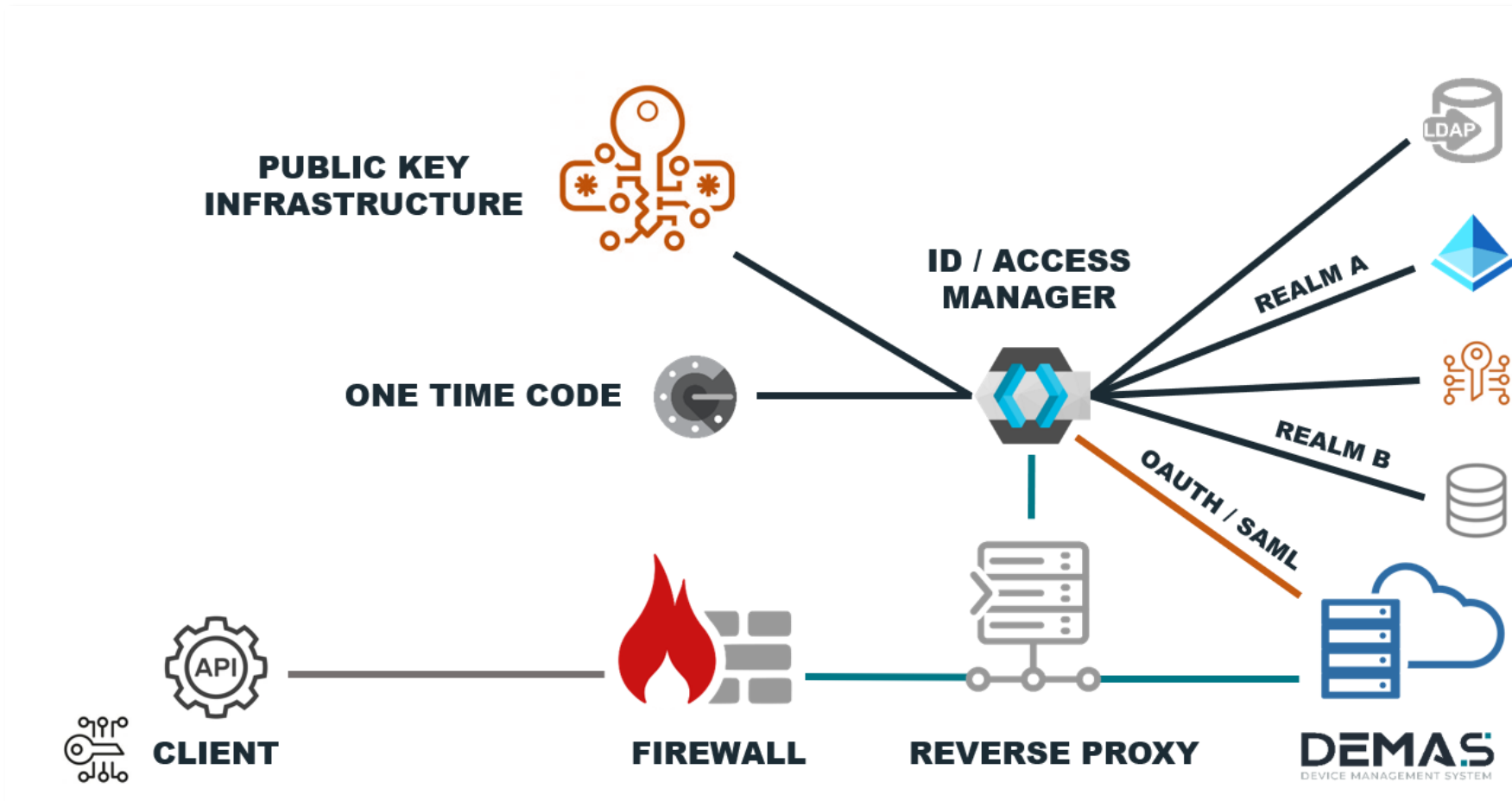


PROVISION OF DATA FOR 3RD-PARTY SYSTEMS (I.E. SCADA)

- INSTALLATIONS ORDER MANAGEMENT



SECURE AUTHORIZATION TO DEMAS



Can be connected to different backends

ASSET MANAGEMENT CORE (DEVICE LIST)

DEMAS
Masterdata ▾
File management ▾
Admin ▾
Ralf Taegener Logout

Device overview
CSV import

Select page
Items per page:
Timerange:
Search:
Columns:

Clipboard:
Device type:
Location:
Organization unit:
Bundle:
Active:

<input type="checkbox"/>	ID	Status	Name	Serial number	MAC address	ASSET ID	Management IP	Management VLAN	ProdNet IP	Pr
<input type="checkbox"/>	1	●	INT-HAR03-WE006-SW	HCX08BP9TWT	18:FD:74:70:4D:EC	WBIA0058T	10.3.6.242/28	vlan13	10.3.6.14/28	vlan1
<input type="checkbox"/>	2	●	INT-HAR02-WE030-SW	HCX088ZKE31	18:FD:74:70:52:24	WBIA0023E	10.2.30.242/28	vlan12	10.2.30.14/28	vlan2
<input type="checkbox"/>	3	●	INT-HAR19-WE019-SW	HCX081MP1GT	18:FD:74:70:4E:AF	WBIA0131M	10.19.19.242/28	vlan29	10.19.19.14/28	vlan1
<input type="checkbox"/>	4	●	INT-HAR19-WE029-SW	HCX08F75JN2	18:FD:74:70:4E:7D	WBIA0016R	10.19.29.242/28	vlan29	10.19.29.14/28	vlan2
<input type="checkbox"/>	5	●	INT-HAR19-WE015-SW	HCX089TEAS6	18:FD:74:70:4A:B3	WBIA0156W	10.19.15.242/28	vlan29	10.19.15.14/28	vlan1
<input type="checkbox"/>	6	●	INT-HAR02-WE036-SW	HCX080WQ443	18:FD:74:70:4D:CE	WBIA0149R	10.2.36.242/28	vlan12	10.2.36.14/28	vlan2
<input type="checkbox"/>	7	●	INT-HAR16-WE021-SW	HD20896FZXM	18:FD:74:92:12:EE	WBIA0119G	10.16.21.242/28	vlan26	10.16.21.14/28	vlan1
<input type="checkbox"/>	8	●	INT-HAR01-WE061-SW	HCX0894GDAJ	18:FD:74:70:52:42	WBIA0038U	10.1.61.242/28	vlan11	10.1.61.14/28	vlan3
<input type="checkbox"/>	9	●	INT-HAR17-WE002-SW	HCX08ABCD5D	18:FD:74:70:48:5B	WBIA0158U	10.17.2.242/28	vlan27	10.17.2.14/28	vlan1

ASSET MANAGEMENT CORE (UPDATE FILES)

DEMAS Masterdata ▾ File management ▾ Admin ▾ Ralf Taegener [Logout](#)

File overview [Add new](#)

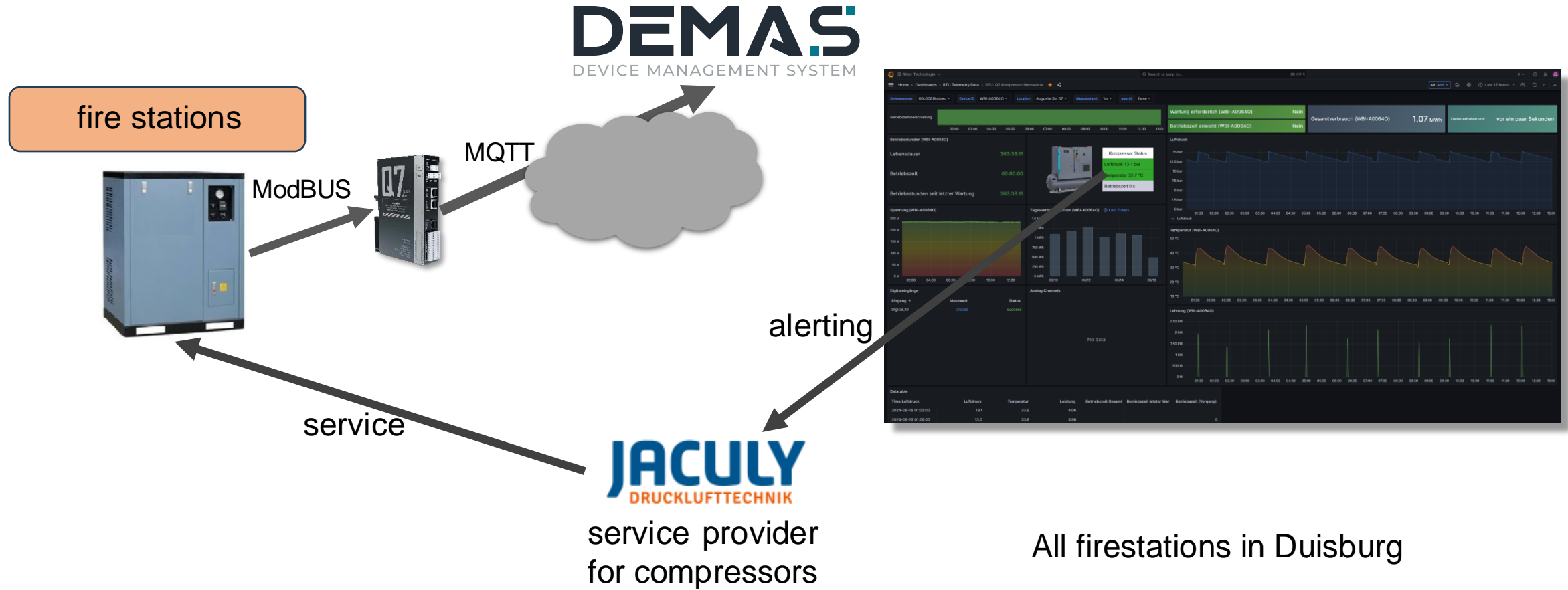
- Files
- Bundles
- Distribution tasks

Select page: 1 / 1 | 25 | Timerange: From Till | Search: min. 3 character | Columns: Select

Device type: | Version: | Status:

ID	UUID	Name	Device type	Version	File name
6	a0f027af-4831-48cb-aba3-349db6c3fba7	global-cfg_demo-demas-cloud_a0f027af-4831-48cb-aba3-349db6c3fba7.tar	rtu-sl-plus		global-cfg_demo-demas
7	79b629c8-8274-4d1c-b8b2-ab790fc37ad8	local-cfg_hwtype-uw7-a75-j-db-rtu-q7_79b629c8-8274-4d1c-b8b2-ab790fc37ad8.tar	db-rtu-q7		local-cfg_hwtype-uw7-a7
8	ae8f0300-105d-4140-b8fd-ce3c941cacf7	global-cfg_demo-demas-cloud_ae8f0300-105d-4140-b8fd-ce3c941cacf7.tar	db-rtu-q7		global-cfg_demo-demas
9	74115d86-6daf-46fe-813f-8acc0972c1f9	local-cfg_ipsec-demasvpn-tls-data-de_74115d86-6daf-46fe-813f-8acc0972c1f9.tar	db-rtu-q7		local-cfg_ipsec-demasvp
13	d6002428-d7e7-11ee-afc6-0242ac110002	firmware_uq7-a75-j_release_00413_d6002428-d7e7-11ee-afc6-0242ac110002.tar	db-rtu-q7		firmware_uq7-a75-j_rele
14	bc0e5394-da0f-11ee-9fd6-0242ac110002	firmware_uq7-a75-j_release_00414_bc0e5394-da0f-11ee-9fd6-0242ac110002.tar	rtu-sl-plus		firmware_uq7-a75-j_rele
15	1d2b002a-da18-11ee-87c4-0242ac110002	firmware_uq7-a75-j_release_00415_1d2b002a-da18-11ee-87c4-0242ac110002.tar	rtu-sl-plus		firmware_uq7-a75-j_rele
16	43afa220-da1b-11ee-a740-81f0eceaef74	mapping_complete.tar	rtu-sl-plus		mapping_complete.tar.g
17	db4f8d20-da1b-11ee-a740-81f0eceaef74	mapping_without_second_104.tar	rtu-sl-plus		mapping_without_secon
18	dce089ce-db87-11ee-bdc1-0242ac110002	firmware_uq7-a75-j_release_00416_dce089ce-db87-11ee-bdc1-0242ac110002.tar	rtu-sl-plus		firmware_uq7-a75-j_rele
19	8166d6d0-dbb8-11ee-a5bf-35dc49cd18f4	TEST_Fluvius_name	rtu-sl-plus	V1.1	mapping_fluvius_demo_
20	5a5cc47f-7625-4579-b12a-4d1f64f11b03	global-cfg_demo-demas-cloud_5a5cc47f-7625-4579-b12a-4d1f64f11b03.tar	db-rtu-q7		global-cfg_demo-demas
21	c251cbf3-f3c8-480b-a23e-0e7d64a68aea	local-cfg_socomec-demo_c251cbf3-f3c8-480b-a23e-0e7d64a68aea.tar	db-rtu-q7		local-cfg_socomec-demo
22	92da5d9a-bd56-44eb-b981-7fb6ae226fc8	local-cfg_socomec-demo_92da5d9a-bd56-44eb-b981-7fb6ae226fc8.tar	db-rtu-q7		local-cfg_socomec-demo

EXAMPLE: FIRE DEPARTMENT DUISBURG



EXAMPLE: QUARTIER HAVELUFER BERLIN



janitor service

INT-HAR21-WE016-SW occupied ports

Status	Port	MAC address	Info
ok	ether1	78:9A:18:48:61:C9	All vendors ok.
ok	ether2	D8:3A:DD:4F:7D:36	Ok. Vendor: Raspberry Pi Trading Ltd
ok	ether3	7C:1E:B3:EE:28:AA	Ok. Vendor: 2N TELEKOMUNIKACE a.s.
ok	ether4	38:DE:60:01:E9:35	Ok. Vendor: Mohlenhoff GmbH



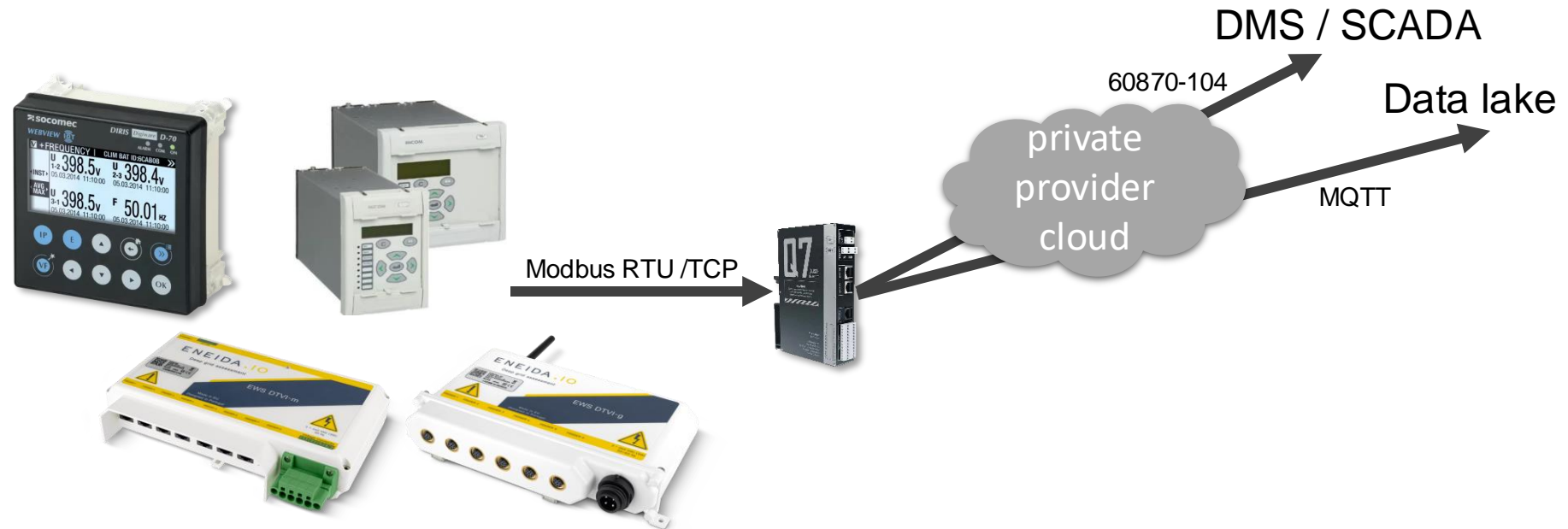
Installation in local datacenter

DEMAS
DEVICE MANAGEMENT SYSTEM

about 2000 Network devices

- Firewalls
- Switches
- RTU
- Router

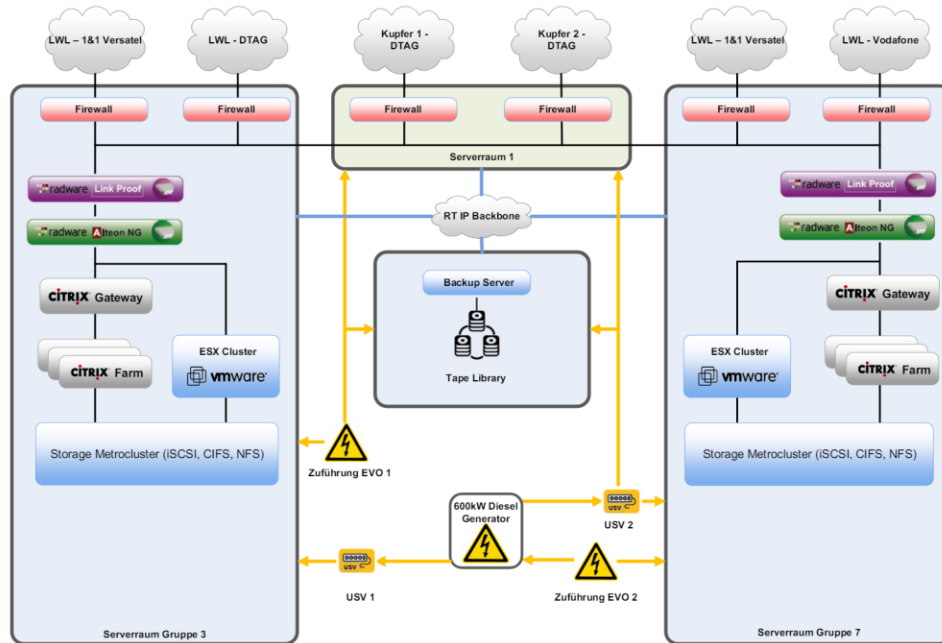
EXAMPLE: SCADA / DMS INTEGRATION



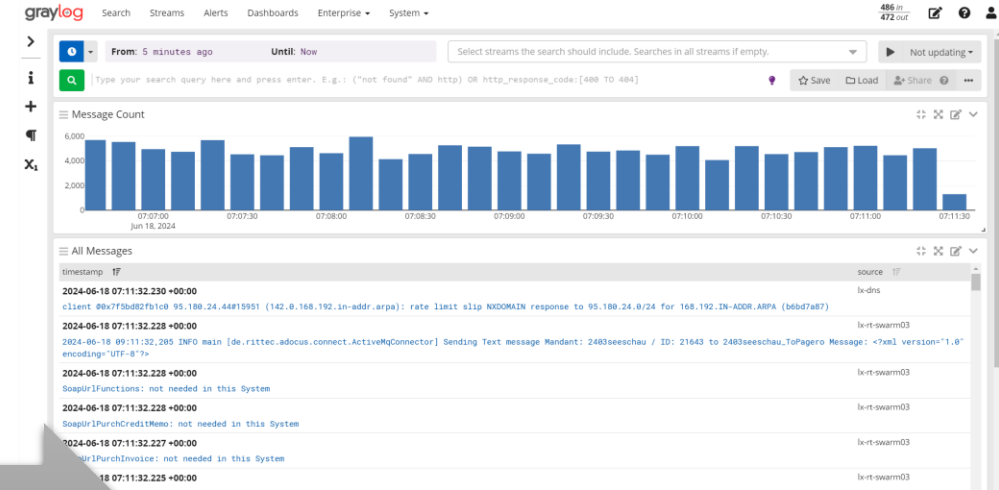
Installation in local datacenter

DEMAs
DEVICE MANAGEMENT SYSTEM

EXAMPLE: MONITORING DATACENTER

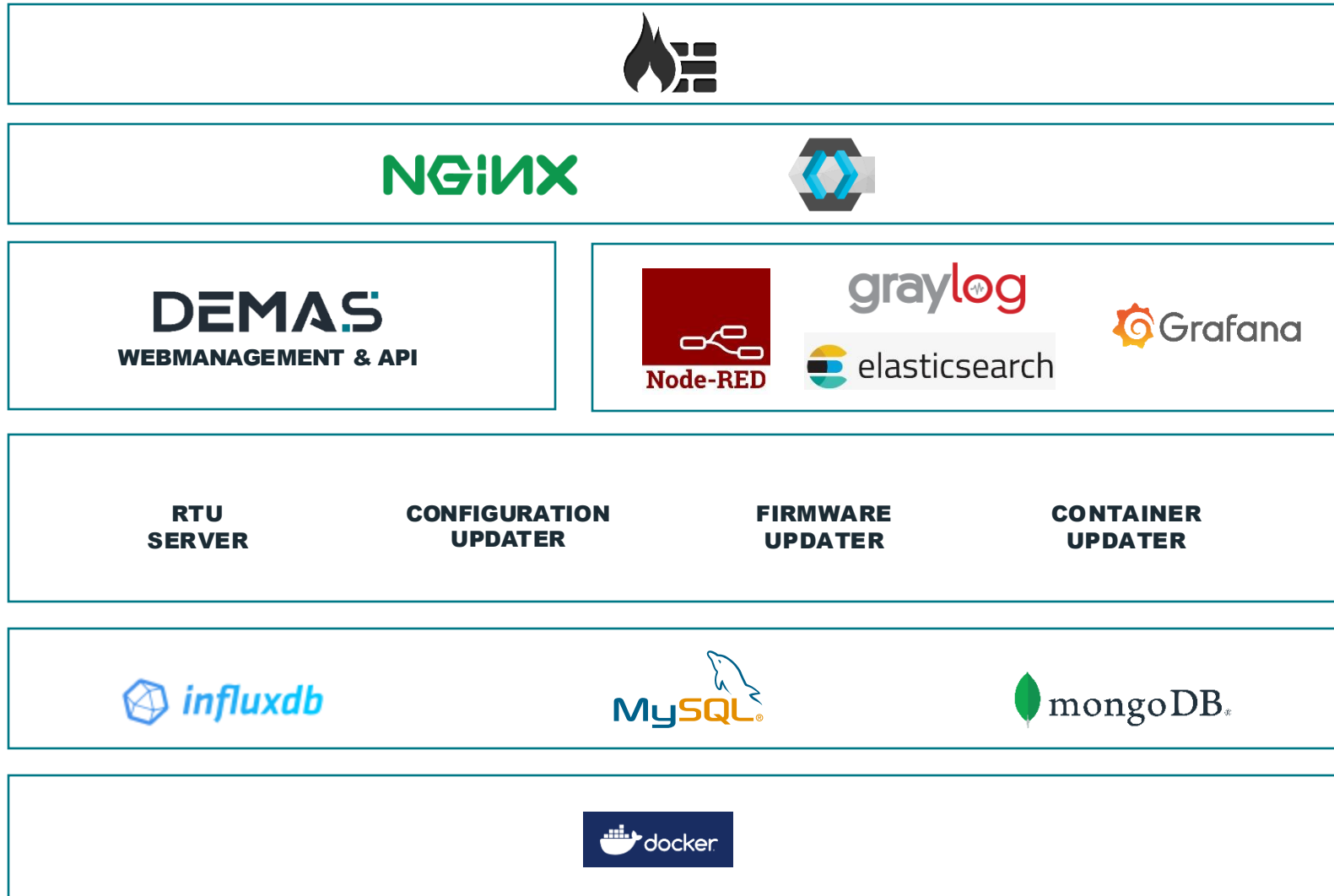


Installation in local datacenter



DEMAS
DEVICE MANAGEMENT SYSTEM

- Several thousand devices
- Firewalls
 - Switches
 - Physical/virtual Server
 - Router



LIVE DEMO



PRIZING

Quantity scale:

- Scale ranges based on number of devices: 0 -100 – 500 – 1.000 – 5.000 -10.000+

Number of protocols:

- supported: SNMP, IPsec, IEC60870, MQTT, Wireguard, Modbus RTU/TCP, MATTER, Talq, RDDDL

Support period agreed in advance:

- available from 1 to 10 years
- 15% of the applicable list price per year

Onboarding (optional):

- Creating of implementation process
- Installation and Configuration
- Connection to existing customer systems
- Developing of customer specific functions

Q&A and Next Steps

DEMAS
DEVICE MANAGEMENT SYSTEM



RITTER
TECHNOLOGIE

CONTACT

RITTER TECHNOLOGIE GMBH

Essener Straße 2-24
46047 Oberhausen, Germany
Phone: +49 208 85 96 230

MAX KÜPPER
Max.kuepper@rittec.de

RALF TAEGENER
ralf.taegener@rittec.de